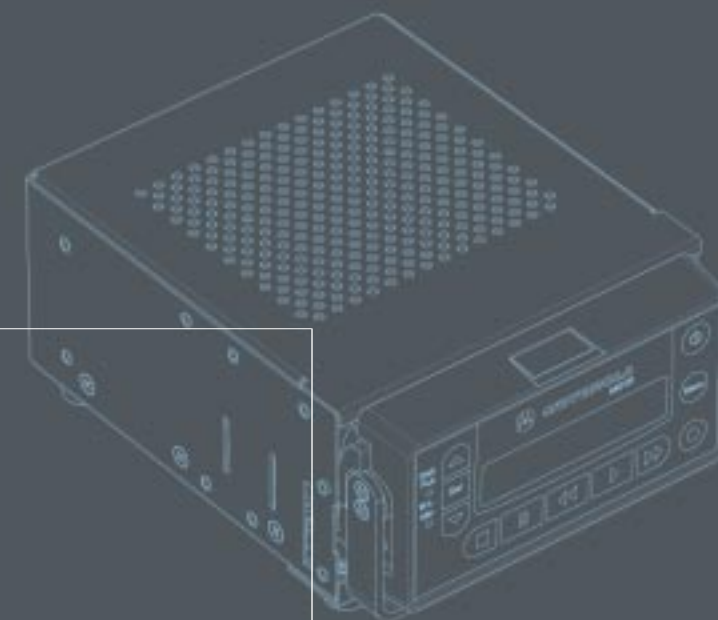


**PORTABILITY  
ON PATROL**



The Motorola Mobile Video Enforcer goes wherever your mobile workforce does, offering optimum security and control. The unit is so light and compact, officers can easily remove it from the in-vehicle docking station and carry recorded data with them.



Motorola's Commercial, Government and Industrial Solutions Sector is a recipient of the prestigious 2002 Malcolm Baldrige National Quality Award. This honor demonstrates our commitment to performance excellence and quality achievement.



Motorola and the Stylized M logo are registered in the U.S. Patent and Trademark Office. All other product or service names are the property of their respective owners.  
© Motorola, Inc. 2003.

Motorola, Inc.  
1301 East Algonquin Road  
Schaumburg, IL 60196

In the U.S., call: 1-888-567-7347  
<http://www.motorola.com/publicsafety/mobilevideo/>  
RC-14-2007

**MVE**

**Motorola Mobile Video Enforcer**

**PROVEN RELIABILITY AND RESULTS GO ON PATROL**

**CAPTURE THE INCIDENT.  
COLLECT THE EVIDENCE.  
CONVEY THE INFORMATION**

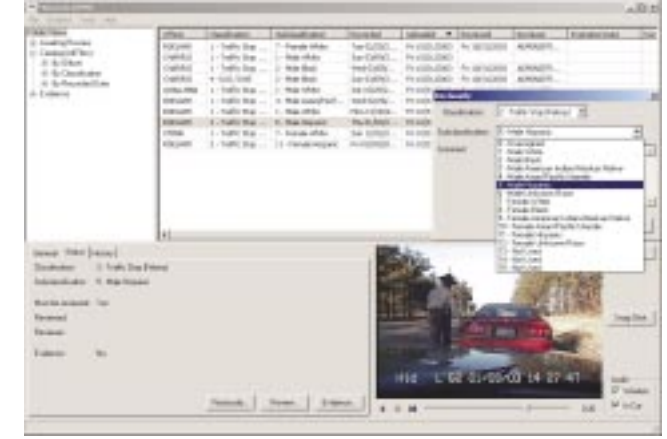
The Motorola Mobile Video Enforcer digitally captures and manages incidents anywhere patrol officers go. This innovative system is a truly "smart" partner, seamlessly integrating in-vehicle capture with in-office management of collected data.

Now you can maximize supervisor and patrol effectiveness with an intelligent in-car video system that automates day-to-day operation and distinguishes priority recordings. And collect high-quality video and audio evidence accurately and authoritatively in any environment through officer-friendly interfaces.



**IMPROVE YOUR VIEW**

Get virtually 400% more information than analog systems



**MAKE MY DATA.**

The Enforcer consists of a Mobile Digital Video Recorder (MDVR) placed in the public safety vehicle and a Digital Video Management Solution (DVMS) located in the office.

**THE MDVR: COMPLETE IN-VEHICLE SOLUTION**

This advanced, compact device is road-tested for the rigors of public safety. With its integrated LCD display and controls, multiple cameras and multiple audio support, it assures tamper-proof evidence collection and embedded situation information.

- 60 GB Hard Drive with 24 hours of recording capacity
- Superior, full-motion (30 fps), standards-based, MPEG-2 video is the same quality in DVDs
- Automatic, event-triggered recording based on lights, sirens, microphone and other inputs
- Pre-event recording captures what occurred before the video activates – running red lights, crossing medians to establish probable cause, speeding violations
- Automatic Quick Zoom camera obtains vital information without officer intervention
- Interfaces with Motorola's latest ruggedized computers (MW 800, ML 900)

**THE DVMS: COMPLETE IN-OFFICE SOLUTION**

This integrated unit automatically uploads, archives and manages captured video. It's so comprehensive, all activity is logged with each incident video, including playback.

- Your agency defines the classification system to catalog each video clip
- File and Retention Management is integrated with classification system to ensure policy compliance
- Racial profiling fields, defined by agency, capture mandated information where required
- Search and sort videos by officer, classification fields and other methods
- Access stored information over your network
- Output still pictures and video clips in standard format for training or evidentiary purposes
- Get automatic software updates to Motorola's MDVRs



**THE RESULTS ARE CLEAR WHEN  
MOTOROLA IS ON PATROL**

**RESULTS**

**Increase Officer Safety with "QuickZoom" Capture**

Get a wider field of view, virtually 400% more than analog systems. The automatic zoom feature eliminates glare and ensures capture of license plate images under varying weather and light conditions.

**Ensure Tamper-Proof Evidence**

Eliminate the downsides of analog, including any opportunity to overwrite or modify recordings in the field. Remove the requirement for the steel trunk vault restore, the car safety "crush zone" to manufacturer's specifications, while recovering valuable trunk space. Free supervisors from the time-consuming task of removing tapes from vehicles.

**Prioritize Incident Review and Retrieval**

Access a more effective and efficient incident review and storage using the intelligent content classification system. Content can also be searched based on officer, date or time. PC-based review is 10 times faster and less costly than tape storage, management and replacement.

**Improve Performance and Reliability**

Get four times the recording capacity of analog while eliminating the need to clean tape heads and maintain or repair the VCR. Digital files won't degrade and authorized copies offer the same quality as the original.

**Simplify Installation and Operation**

With a recorder that easily mounts in-vehicle, a LCD status display and menu navigation, the Enforcer lowers your cost and installation time while making operation easy.

**Leverage and Integrate In-Vehicle Equipment**

Use with MDVRs or display on in-car computers such as Motorola's Ruggedized Mobile Workstation (MW800) and Ruggedized Laptop (ML900). The Enforcer includes spare RS-232 and USB ports and expansion room for new hardware and software features.